



A decorative border consisting of a grid of green and white squares, with the text centered in the white space.

STARTING
BATTERIES

M18 Kamina Plugs



Code	Description	Labyrinth	O-ring	Flat Gasket
C800	Version with labyrinth and without gasket	YES	NO	NO
C800OR	Version with labyrinth and with o-ring	YES	YES	NO
C800FJ	Version with labyrinth and with flat gasket	YES	NO	YES
C802	Version without labyrinth and without gasket	NO	NO	NO
C802OR	Version without labyrinth, with o-ring	NO	YES	NO
C802FJ	Version without labyrinth, with flat gasket	NO	NO	YES

M18 plug with flame arrestor

Code	Description
C800FA	M18 plug with labyrinth, flame arrestor and flat gasket



M18 Plugs (2 holes on the top)



Code	Description	Labyrinth	O-ring	Flat Gasket
C801	Version with labyrinth and without gasket	YES	NO	NO
C801OR	Version with labyrinth and with o-ring	YES	YES	NO
C801FJ	Version with labyrinth and with flat gasket	YES	NO	YES
C803	Version without labyrinth and without gasket	NO	NO	NO
C803OR	Version without labyrinth, with o-ring	NO	YES	NO
C803FJ	Version without labyrinth, with flat gasket	NO	NO	YES

ABS M27 plugs



Code	Description
C900	ABS M27 plug without labyrinth
L500	Labyrinth for ABS M27 plug (to be pushed in after battery formation with acid recirculation)
L500ASS	ABS M27 plug with labyrinth (already assembled)

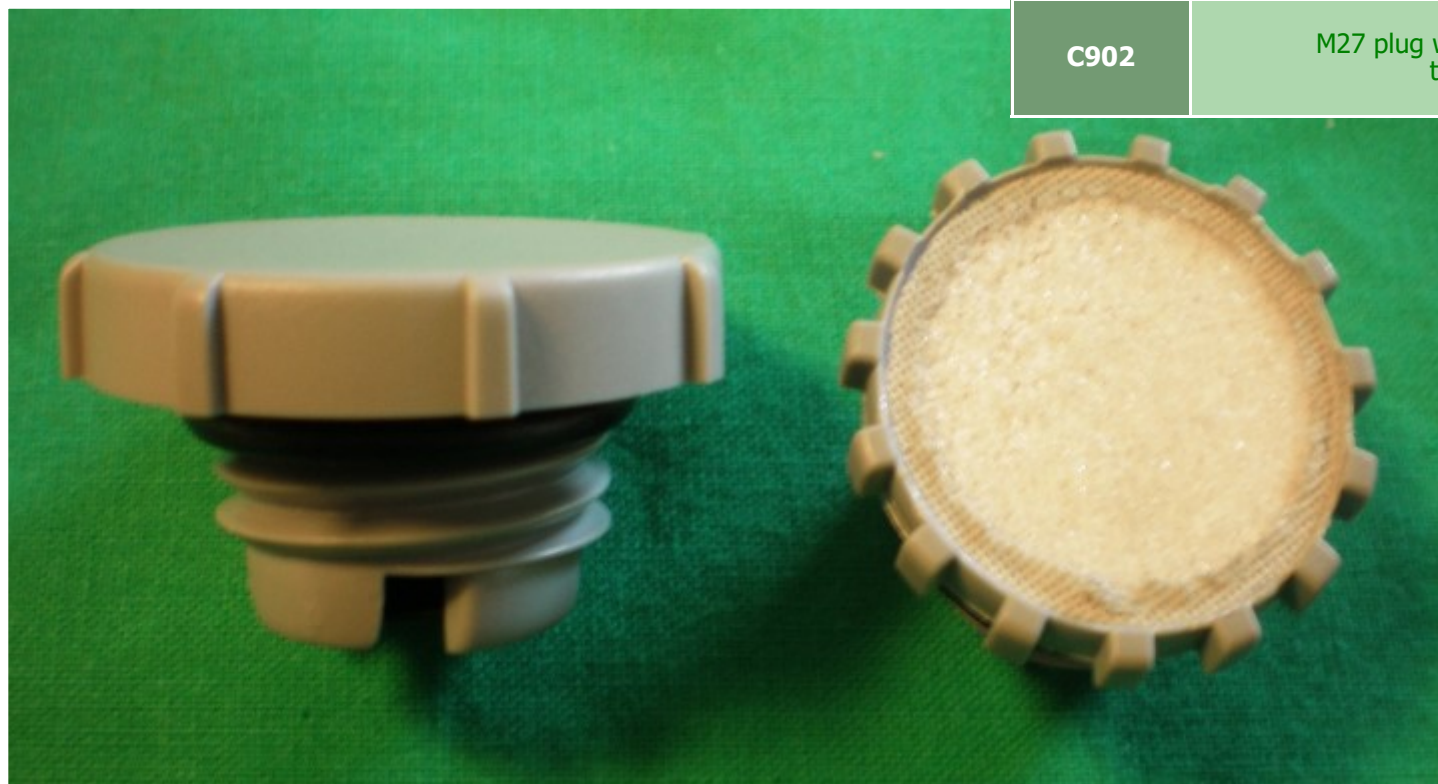
Twin-shot M27 plugs



Code	Description
C1000	ABS M27 plug with twin-shot moulded flat gasket, without labyrinth
L500	Labyrinth for ABS M27 plug (to be pushed in after battery formation with acid recirculation)
C1000ASS	ABS M27 plug with twin-shot moulded flat gasket, with labyrinth (already assembled)

M27 plug with flame arrestor

Code	Description
C902	M27 plug with labyrinth, flame arrestor, top cover and o-ring

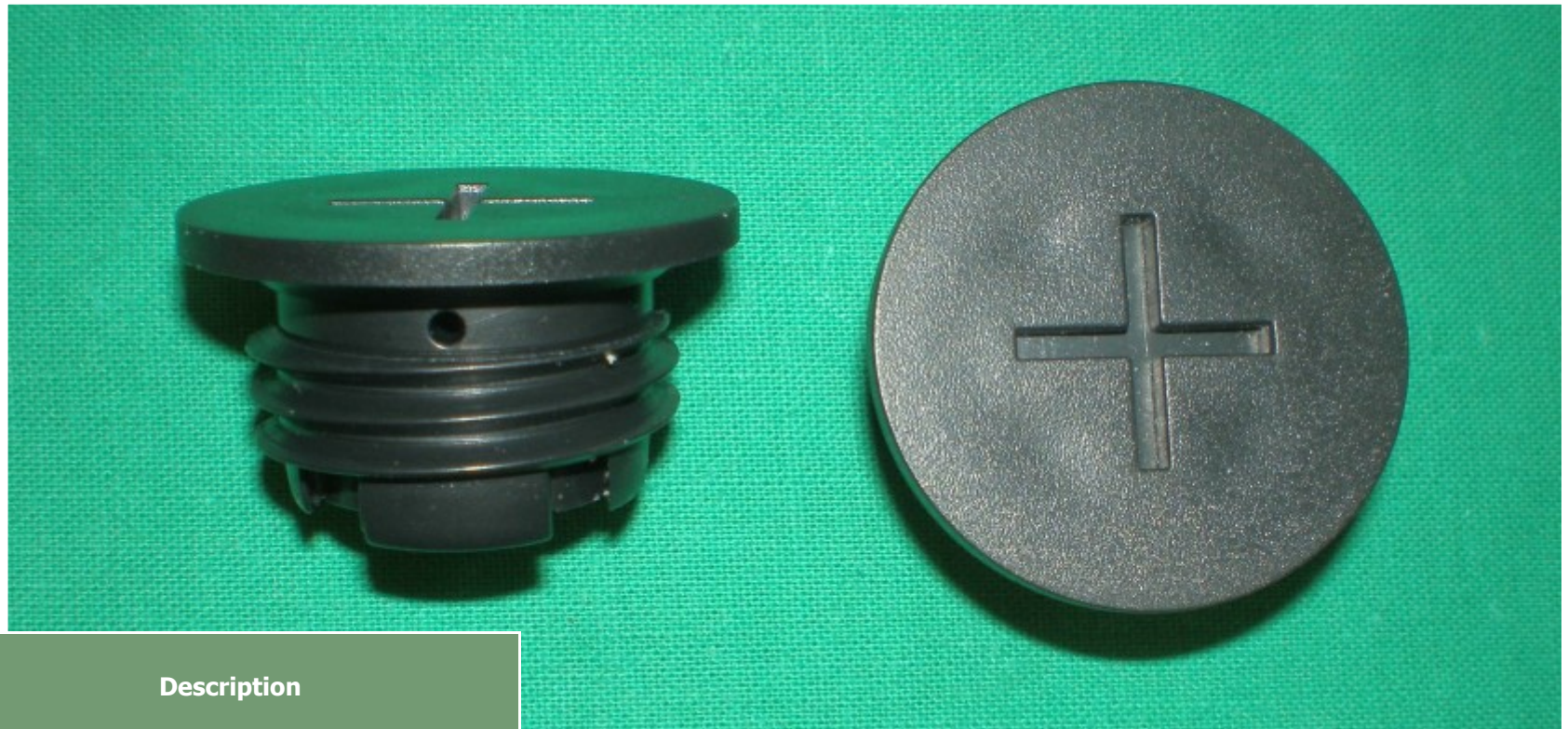


DIN M27 plugs

Code	Description
C903	DIN M27 plug with labyrinth, without o-ring
C903OR	DIN M27 plug with labyrinth, with o-ring



M27 Kamina plug



Code	Description
C904	Kamina M27 plug with labyrinth, without o-ring

Unscrewable M27 plug



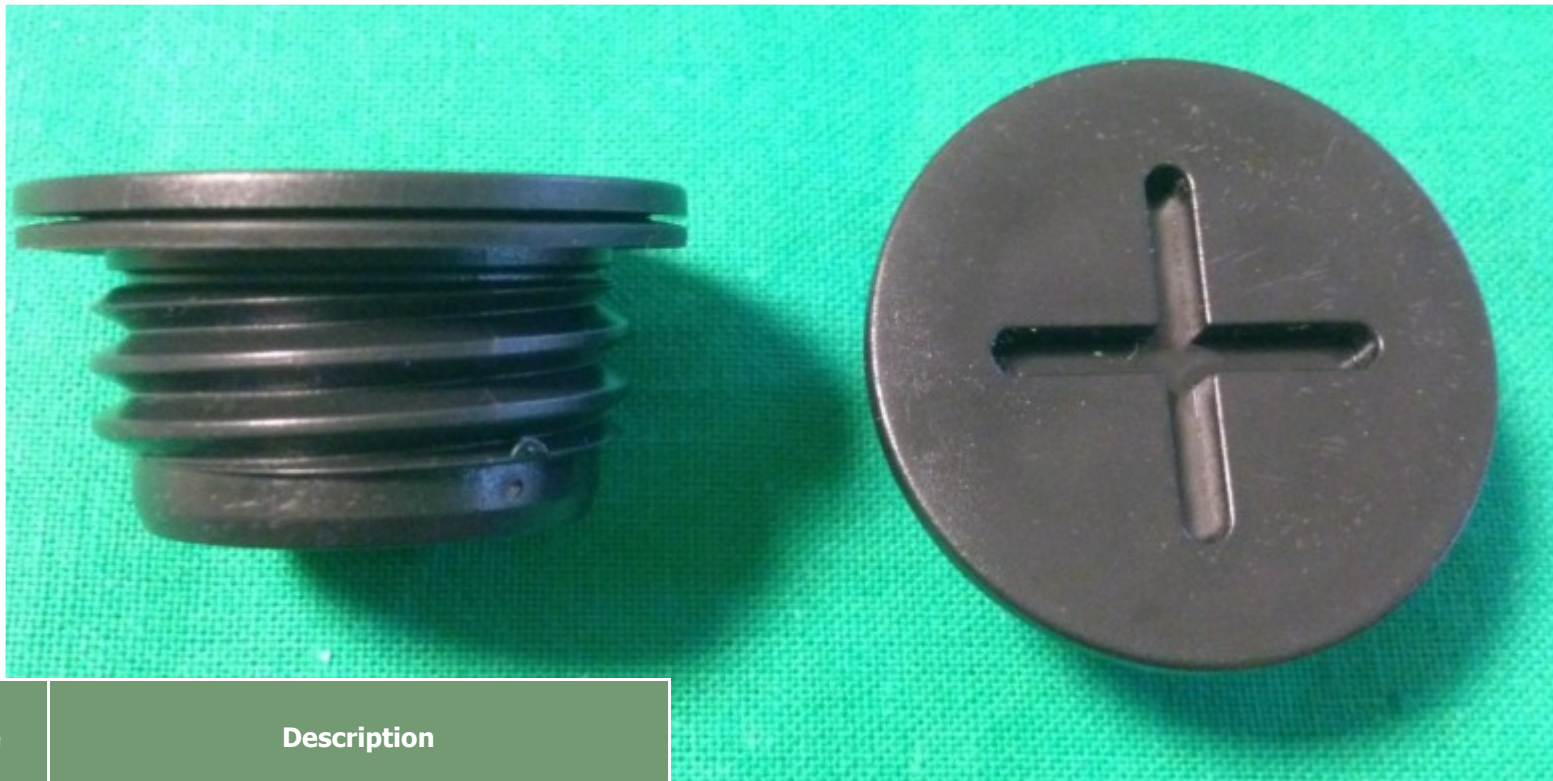
Code	Description
C905	Unscrewable M27 plug with flame arrestor

M27 plug with removable tap



Code	Description
C906	M27 plug with removable tap

M27 plug with flat gasket, without venting hole



Code	Description
C907	M27 plug with flat gasket, without venting hole

VRLA Plugs

Code	Description
VRLA-P	Push-in VRLA plug
VRLA-M18	M18 VRLA plug
VRLA-M27	VRLA M27 plug



Nato M18 Plug



Code	Description
M18 NATO	Nato M18 Plug

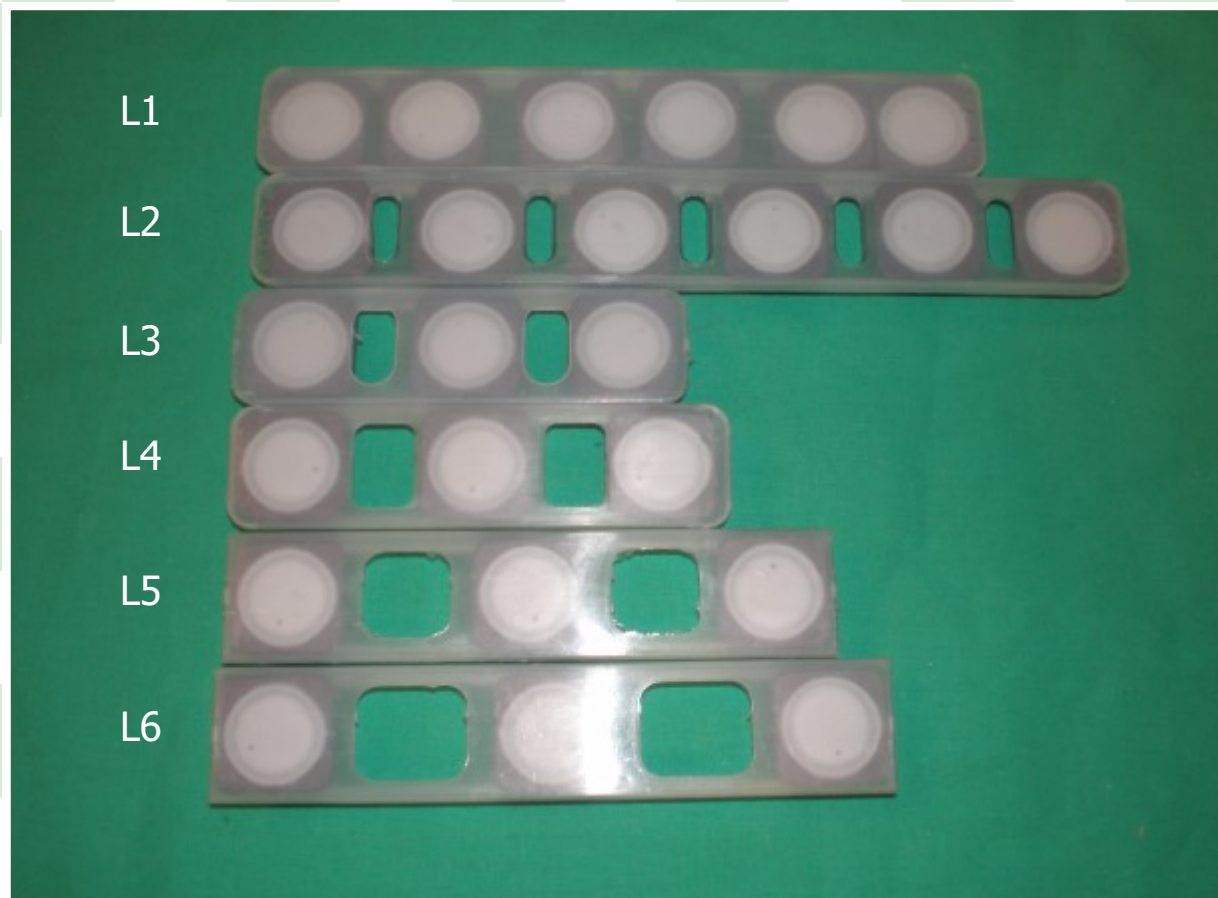
Pressure-joint vent plug



Code	Description
TPS	Pressure-joint vent plug

Multiple VRLA plugs

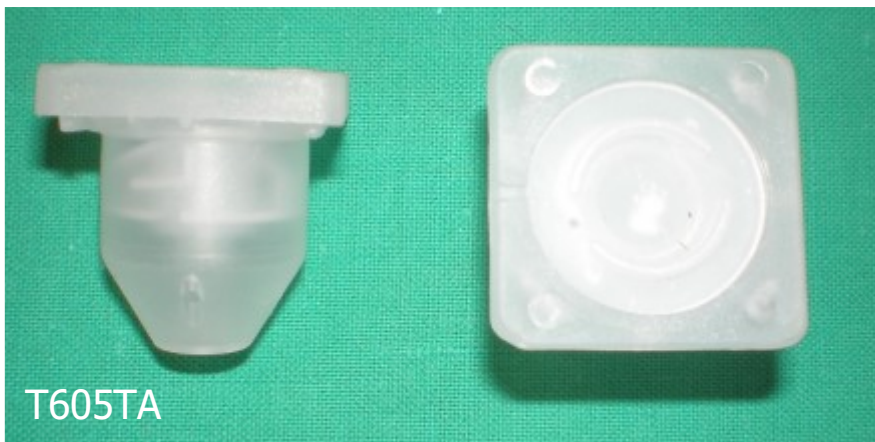
Code	Description
VRLA-PI-L1	L1 Sextuple VRLA push-in plug
VRLA-PI-L2	L2 Sextuple VRLA push-in plug
VRLA-PI-L3	L3 Triple VRLA push-in plug
VRLA-PI-L4	L4 Triple VRLA push-in plug
VRLA-PI-L5	L5 Triple VRLA push-in plug
VRLA-PI-L6	L6 Triple VRLA push-in plug



Single plugs



Code	Description
T605TA	New Profile single plug with labyrinth
T700CNP	Single short plug with labyrinth and top cover
T700NP	Single long plug with labyrinth and top cover



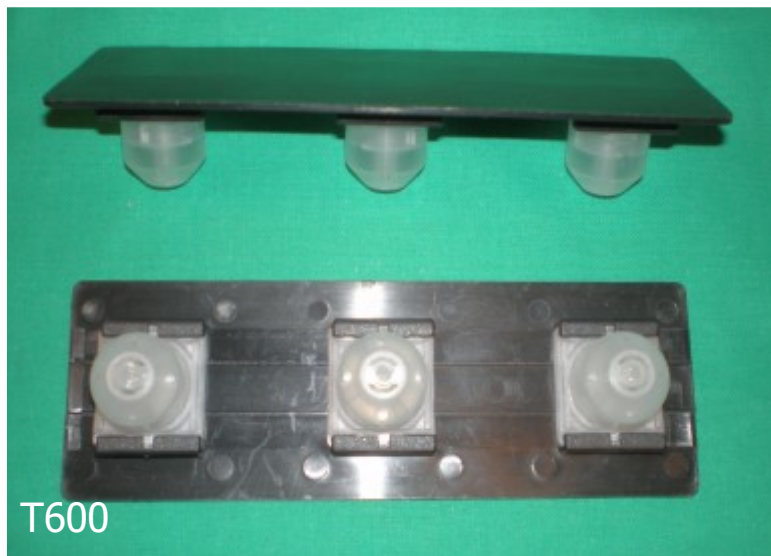
New Profile sextuple push-in plugs

Code	Description
T608	New Profile L0
T605	New Profile L1
T606	New Profile L2
T607	New Profile L3

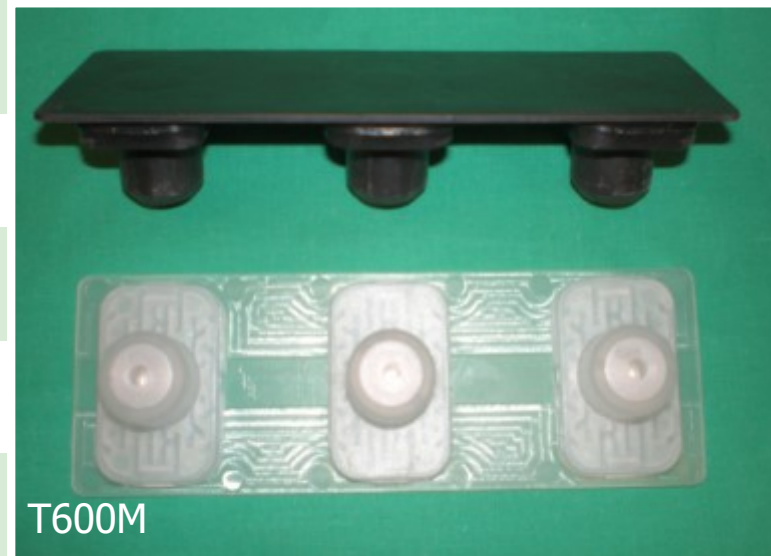


Compact triple push-in plugs

Code	Description
T600	Compact triple push-in plugs with labyrinth
T600M-L	Compact triple push-in plugs "manifold type" with labyrinth
T600M-LP	Compact triple push-in plugs "manifold type" with labyrinth and flame arrestor



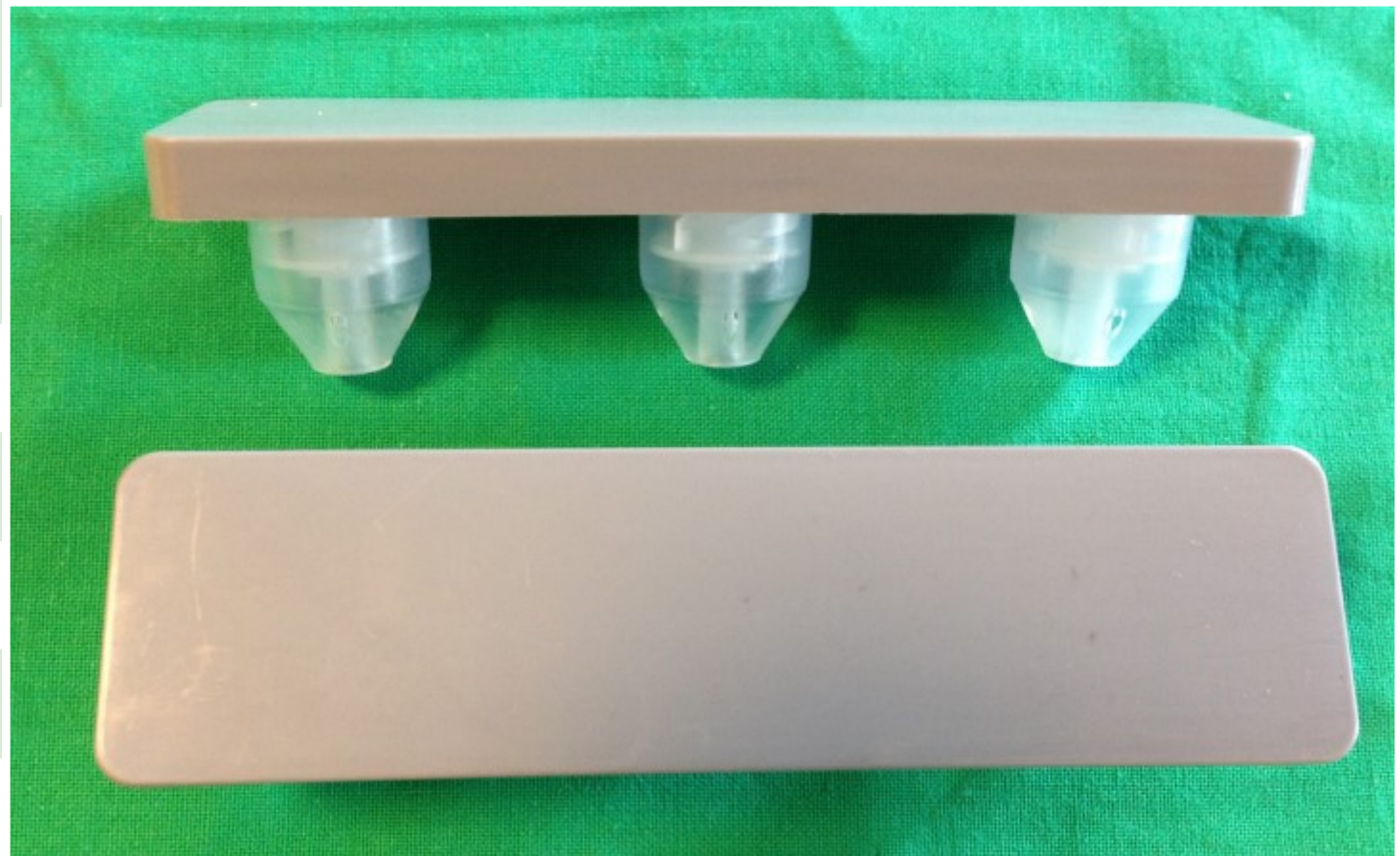
T600



T600M

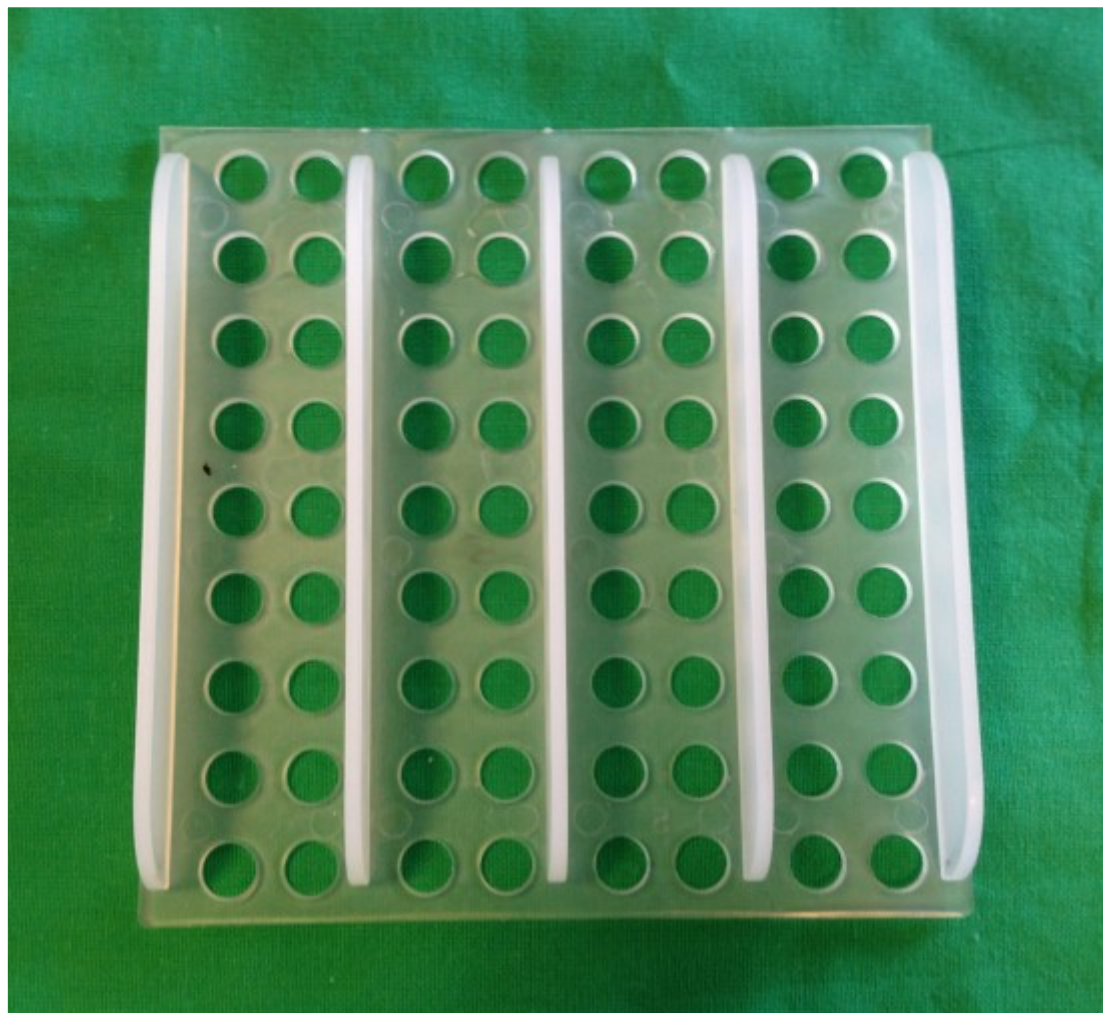
U40K Triple plug

Code	Description
RA41	U40K triple plug



Square packing 15 mm

Code	Description
INT15	Square packing 15 mm



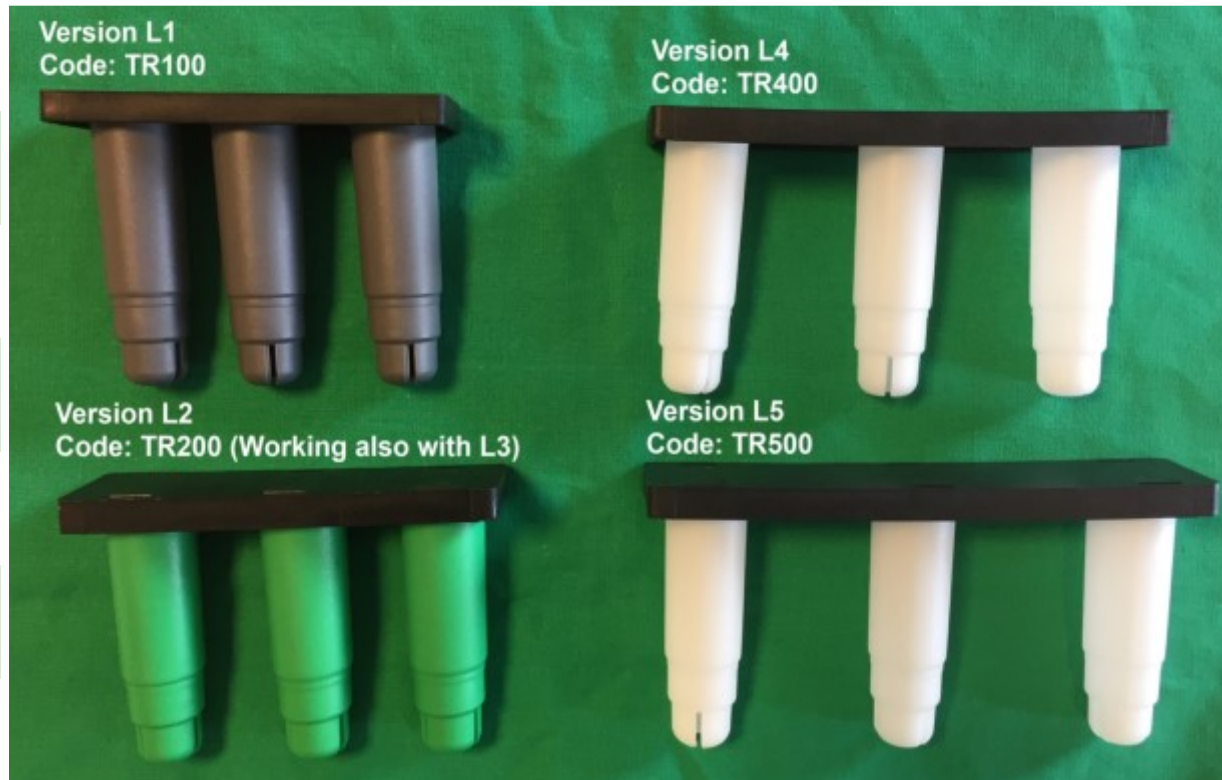
Fork packing h. 5 mm

Code	Description
INT-FOR	Fork packing h.5 mm



Triple formation plugs

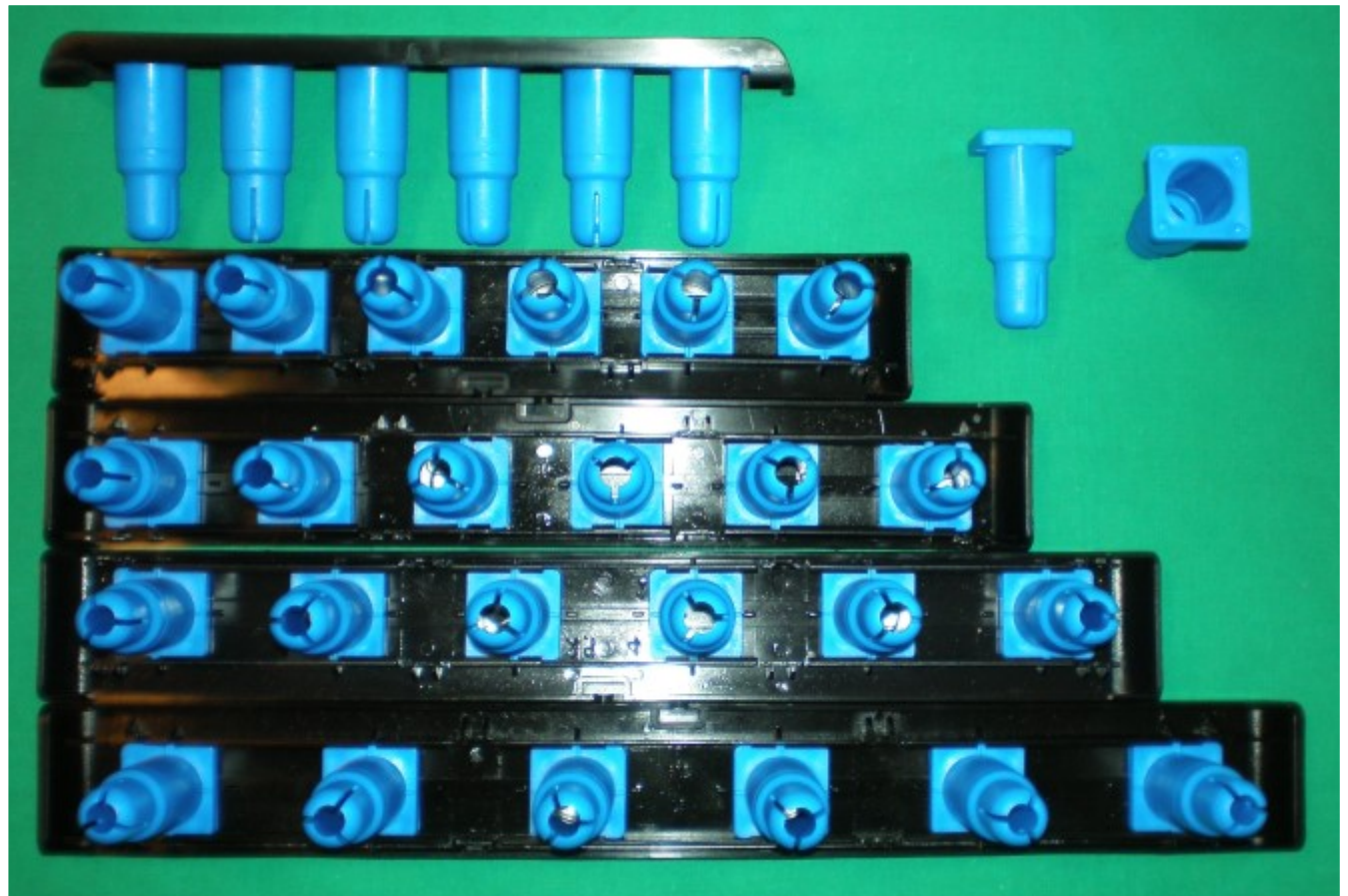
Code	Description
TR100	L1 triple formation plug
TR200	L2 triple formation plug
TR400	L4 triple formation plug
TR500	L5 triple formation plug



Single and multiple service plugs

"PR TYPE"

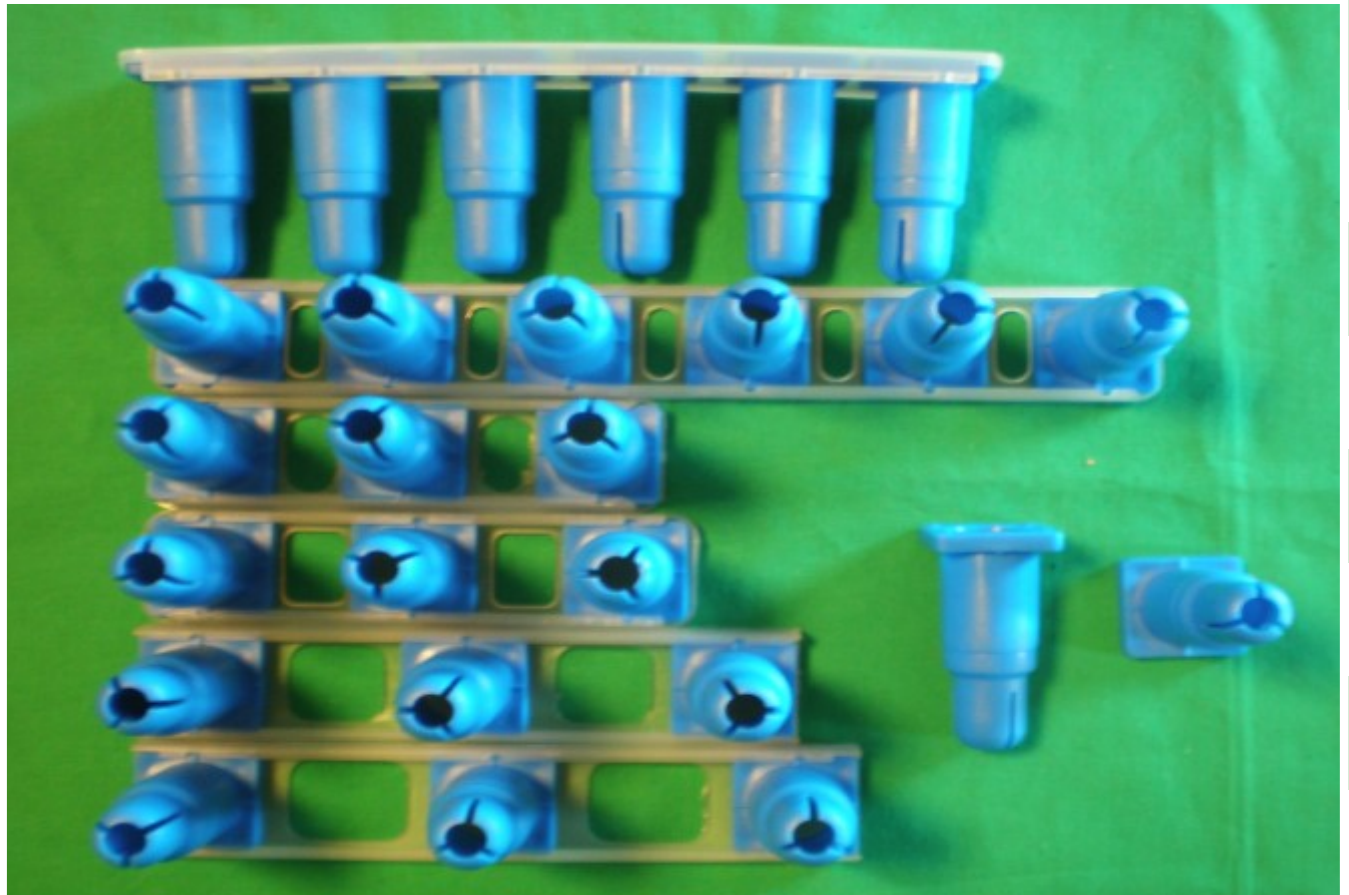
Code	Description
T601	Single service plug
T714	"PR Type" L1 Sextuple service plug
T724	"PR Type" L2 Sextuple service plug
T734	"PR Type" L3 Sextuple service plug
T744	"PR Type" L4 Sextuple service plug
T754	"PR Type" L5 Sextuple service plug



Single and multiple service plugs

"ST TYPE"

Code	Description
T601	Single service plug
FOR100-ST	"ST Type" L1 Sextuple service plug
FOR200-ST	"ST Type" L2 Sextuple service plug
FOR300-ST	"ST Type" L3 Triple service plug
FOR400-ST	"ST Type" L4 Triple service plug
FOR500-ST	"ST Type" L5 Triple service plug
FOR600-ST	"ST Type" L6 Triple service plug



L-joining tube

Code	Description
RAC	L-joining tube



L-joining tube with PVC pipe

Code	Description
RAC-L	L-joining tube with PVC pipe

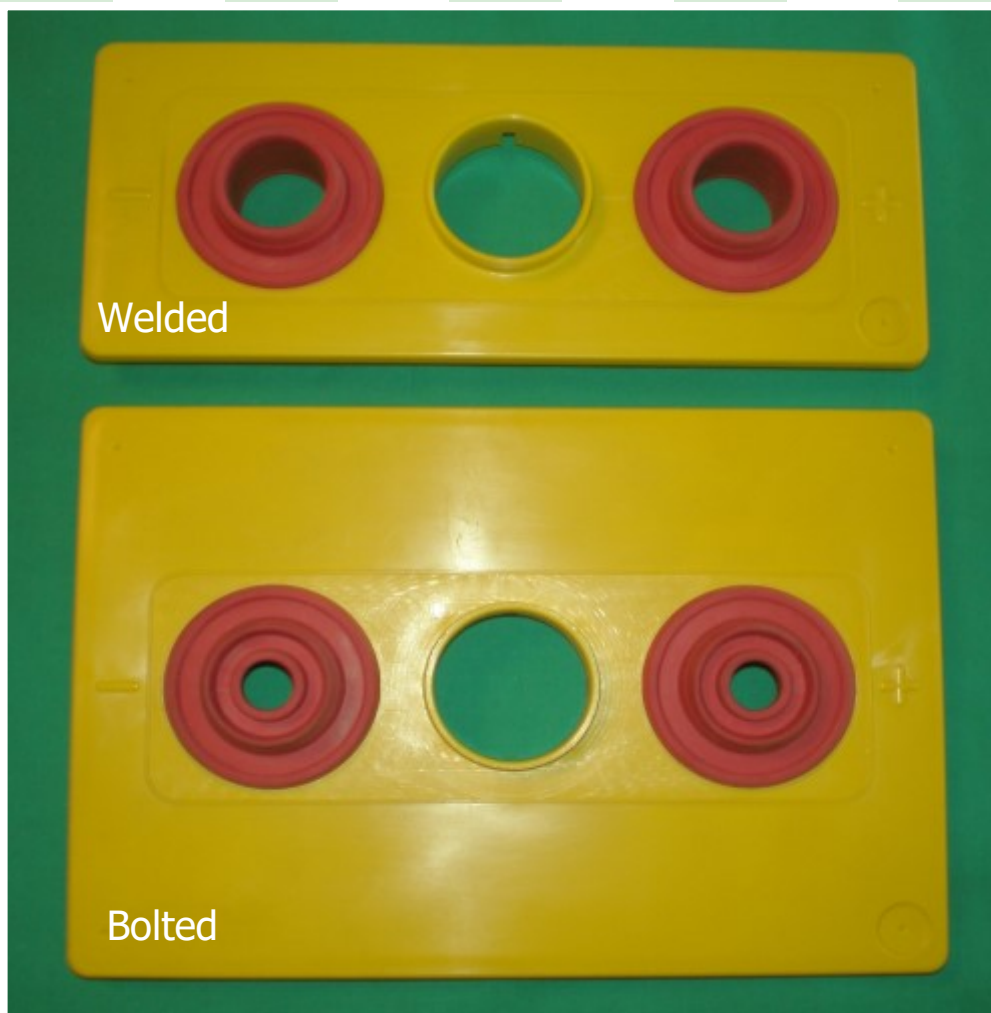


A decorative border consisting of a grid of green and white squares surrounds the central text.

MOTIVE POWER
&
STAND-BY

PzS traction lids

Code	Description
PzS300W	PzS3 traction lid (welded version)
PzS300B	PzS3 traction lid (bolted version)
PzS400W	PzS4 traction lid (welded version)
PzS400B	PzS4 traction lid (bolted version)
PzS500W	PzS5 traction lid (welded version)
PzS500B	PzS5 traction lid (bolted version)
PzS600W	PzS6 traction lid (welded version)
PzS600B	PzS6 traction lid (bolted version)
PzS700W	PzS7 traction lid (welded version)
PzS700B	PzS7 traction lid (bolted version)

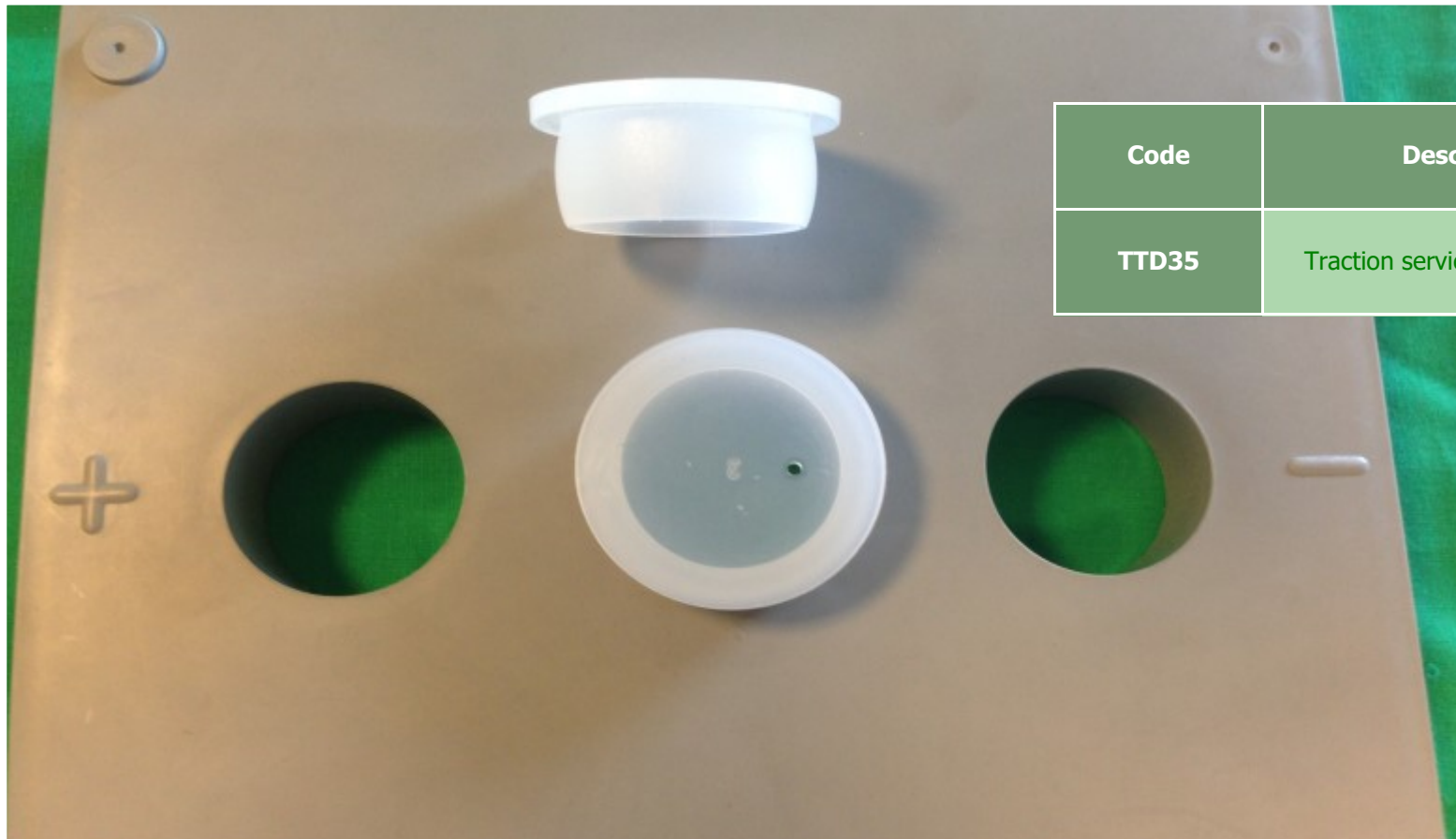


Bayonet plug



Code	Description
TSB100	Traction bayonet plug

Traction service plug D.35 mm

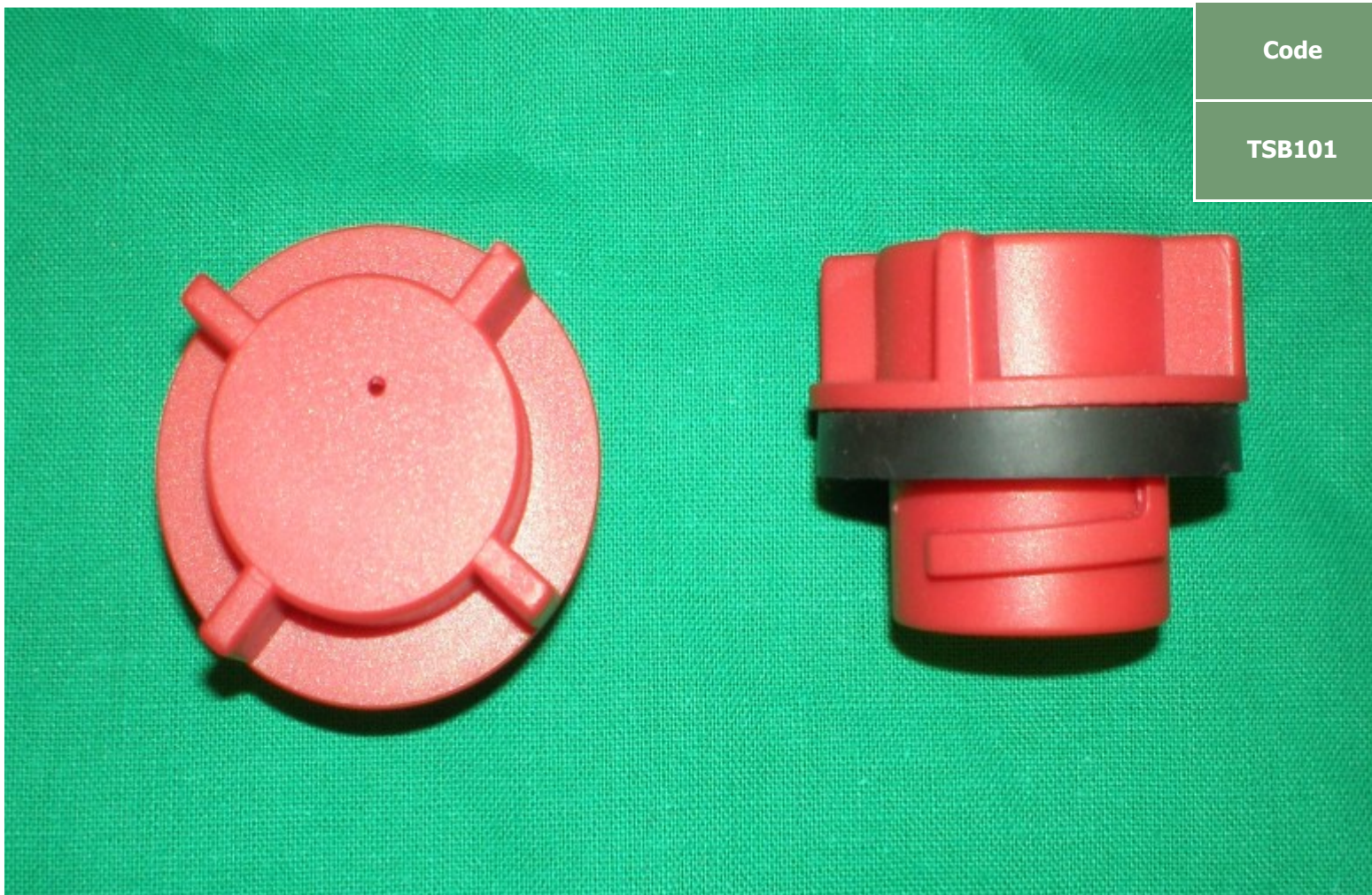


M10 thread protector



Code	Description
TSM10	M10 thread protector

Bayonet plug



Code

Description

TSB101

Traction bayonet plug

Bayonet plug with ceramic flat disk



Code	Description
TSB102	Traction bayonet plug with ceramic flat disk

Bayonet plug



Code	Description
TSB104	Traction bayonet plug without labyrinth
L500	Labyrinth (to be pushed in after battery formation with acid recirculation)
TSB104ASS	Traction bayonet plug with labyrinth (already assembled)

Bayonet plug with ceramic filter



Code

Description

BPCF50

Traction bayonet plug
with ceramic filter H. 50

D. 35 Push-in traction plug for manual refilling



Code	Description
T800-55	D. 35 Push-in traction plug for manual refilling with level indicator H.55
T800-80	D. 35 Push-in traction plug for manual refilling with level indicator H.80
T800	D. 35 Push-in traction plug for manual refilling without level indicator
T800FA	D. 35 Push-in traction plug for manual refilling with flame arrestor
GA55	Level indicator H.55
GA80	Level indicator H.80

Bayonet traction plug for manual refilling

Code	Description
T801-55	Bayonet traction plug for manual refilling with level indicator H.55
T801-80	Bayonet traction plug for manual refilling with level indicator H.80
T801	Bayonet traction plug for manual refilling without level indicator
T801PP	Bayonet traction plug for manual refilling with flame arrestor
GA55	Level indicator H.55
GA80	Level indicator H.80



M27 with basket



Code	Description
C1000-55	M27 plug with basket H.55
C1000-80	M27 plug with basket H.80

M27 with level indicator



Code	Description
M27GAL	M27 plug with level indicator

D. 35 Push-in traction plug for automatic refilling

Code	Description
CL/CG110	D. 35 Push-in traction plug for automatic refilling H.50 - 90°
CL/CG112D	D. 35 Push-in traction plug for automatic refilling H.55 - 90°
CL/CG111	D. 35 Push-in traction plug for automatic refilling H.60 - 90°
CL/CG108	D. 35 Push-in traction plug for automatic refilling H.50 - 180°
CL/CG112	D. 35 Push-in traction plug for automatic refilling H.55 - 180°
CL/CG109	D. 35 Push-in traction plug for automatic refilling H.60 - 180°



Bayonet plug with level indicator and ceramic filter (DIN 40740)

Code	Description
OPZSE	Bayonet plug with level indicator and ceramic filter (DIN 40740)



Bayonet plug with ceramic filter and flip-top cover (DIN 40740)

Code	Description
FLIP	Bayonet plug with ceramic filter and flip-top cover (DIN 40740)



Bayonet plug with long ceramic filter (DIN 40740)

Code	Description
BPCF-A	Bayonet plug with long ceramic filter (DIN 40740)



Plug with ceramic filter, male and female connectors

Code	Description
CL/CG402	Plug with ceramic filter
CL/CG401	Male connector
CL/CG400	Female connector



Ceramic filter with 8 mm connection



Code	Description
TF100	Ceramic filter with 8 mm connection

Connection covers

Code	Description
CL/CG201	Connection cover L.48
CL/CG211	Connection cover L.54
CL/CG221	Connection cover L.65
CL/CG231	Connection cover L.72
CL/CG241	Connection cover L.83
CL/CG251	Connection cover L.90
CL/CG261	Connection cover L.100
CL/CG271	Connection cover L.108
CL/CG281	Connection cover L.118
CL/CG291	Connection cover L.127
CL/CG301	Connection cover L.138
CL/CG311	Connection cover L.145
CL/CG321	Connection cover L.154
CL/CG331	Connection cover L.163
CL/CG341	Connection cover L.172
CL/CG351	Connection cover L.181
CL/CG361	Connection cover L.190
CL/CG371	Connection cover L.199
CL/CG381	Connection cover L.95

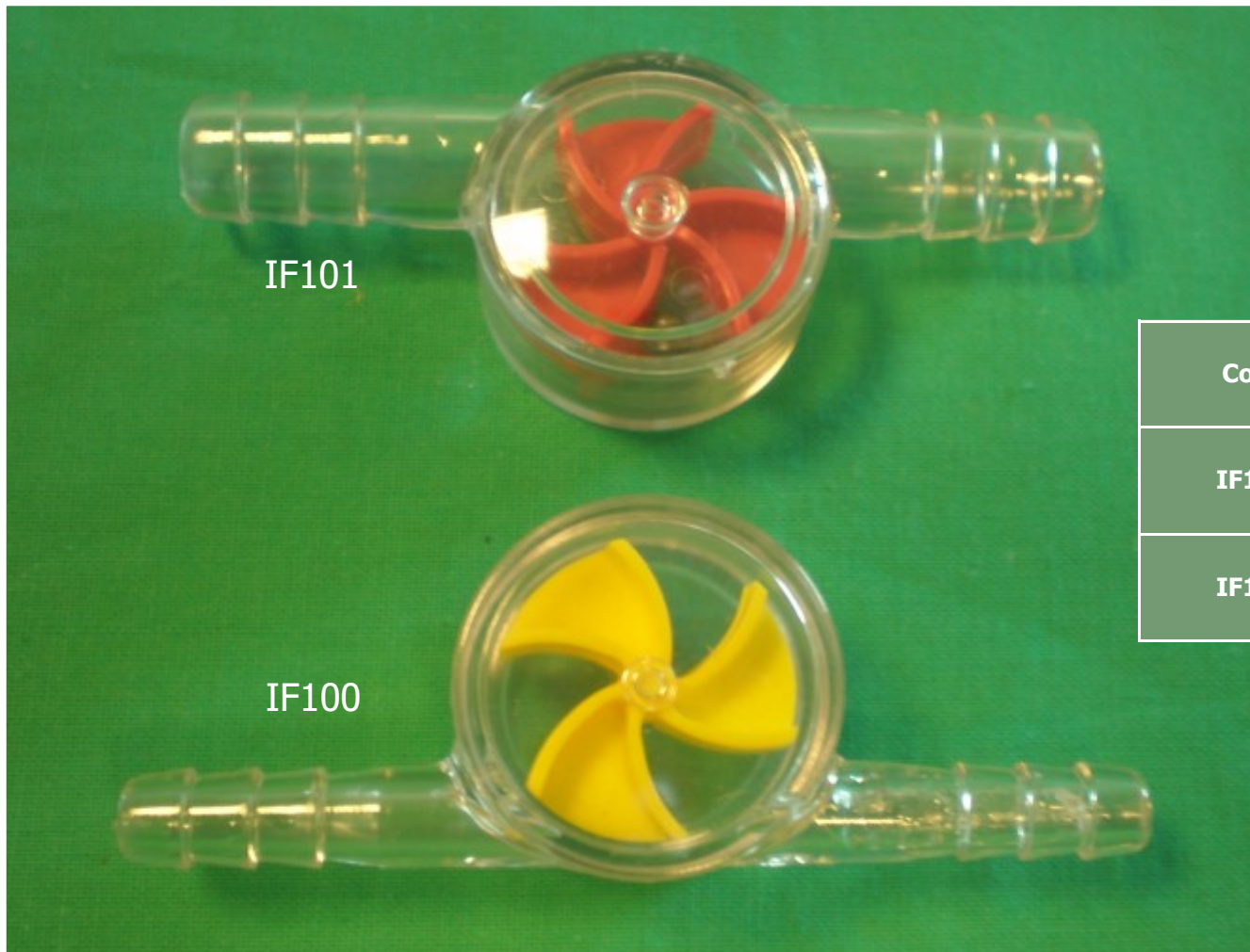


Bottom bar

Code	Description
F800	Bottom bar 18 tubes
F801	Bottom bar 36 tubes

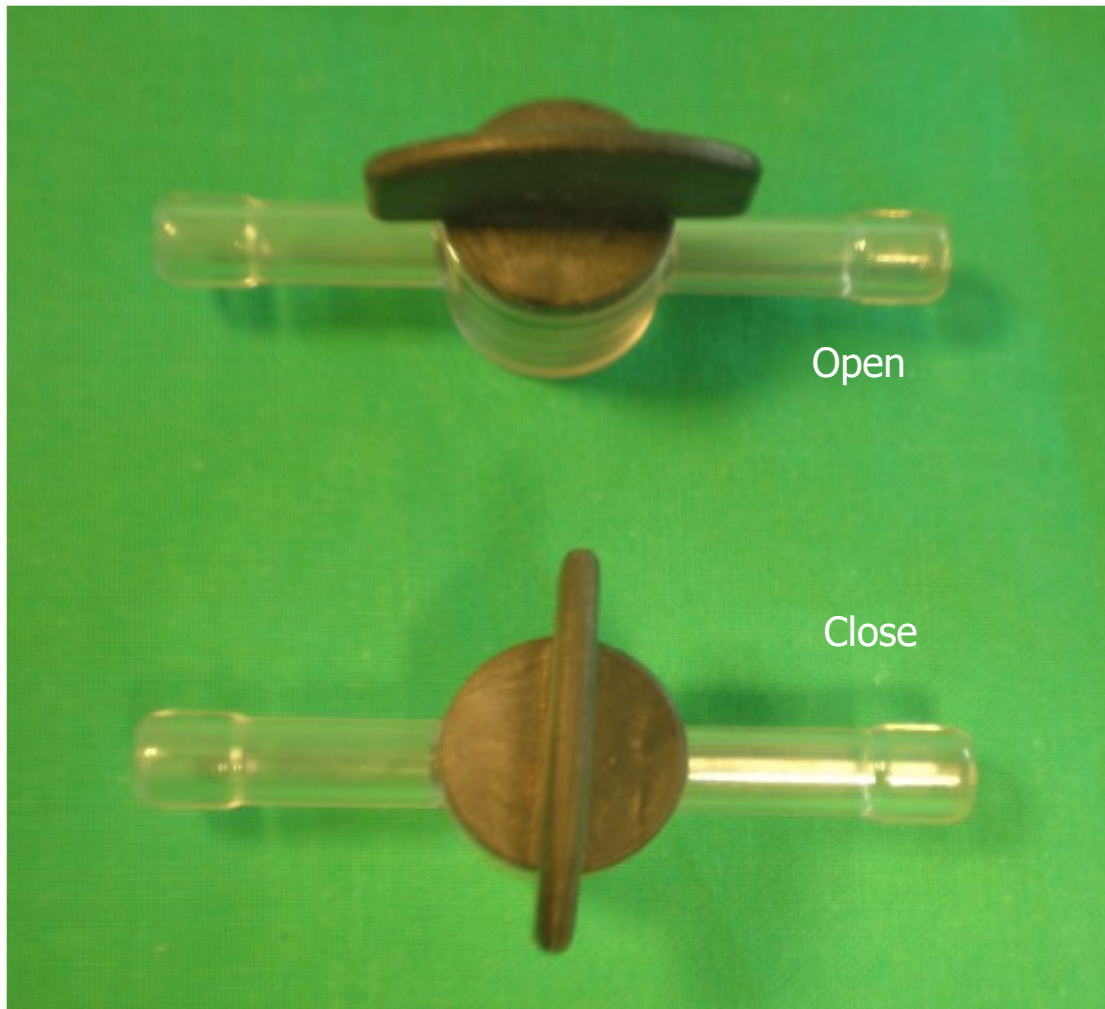


Flow indicators



Code	Description
IF100	Flow indicator D. 8 mm
IF101	Flow indicator D. 12 mm

Tap



Code	Description
CL/CG403	Tap

Nozzle for battery formation with acid recirculation



Code	Description
IN102	Nozzle for battery formation with acid recirculation - bayonet type
IN103	Nozzle for battery formation with acid recirculation - push-in type

A decorative border consisting of a grid of green and white squares, with the text centered within it.

CUSTOM
PRODUCTS



Nozzle for formation with acid recirculation



Thermo-welded manifold with flame arrestors



L3-L4-L5 bottles for AGM formation



**Secondary lids
with flame arrestor
(L0 to L6)**



Handles



**Multiple plugs
(L0 to L6)**



Pole covers

M18 vent plugs



Secondary lids with internal labyrinth and flame arrestor